

3.1.4.6 Calibration curve 6

Table 3.18 Calibration curve data of autosampler test of stability.

Theoretical conc. (ng/ml)	Propranolol Area	Sildenafil Area	Ratio	Measured Conc.	Accuracy %
50	1267	107182	0.0118	56.758	113.52
100	2721	116959	0.0233	96.782	96.78
200	5339	109306	0.0488	186.251	93.13
500	15537	114318	0.1359	490.771	98.15
1000	26315	95590	0.2753	978.266	97.83
2000	55654	100442	0.5541	1953.396	97.67
3000	100731	114673	0.8784	3087.765	102.93

Slope	Intercept	RSQ	Factor	Correllation
0.000286	-0.004407	0.998647	3497.59191	0.999323

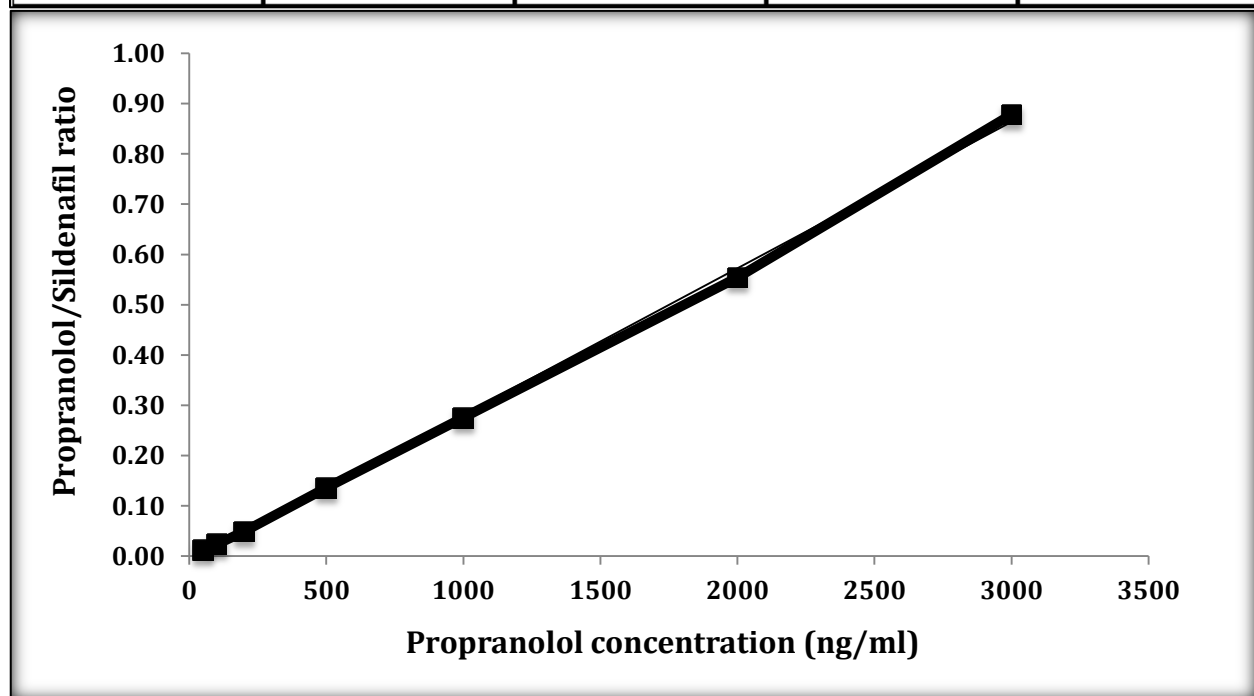


Figure 3.6 Autosampler stability test calibration curve of propranolol in Krebs buffer.

Measured Conc. = (Ratio +0.004407)/ 0.000286
 Function is $Y = 0.000286X - 0.004407$ ($R^2 = 0.998647$)